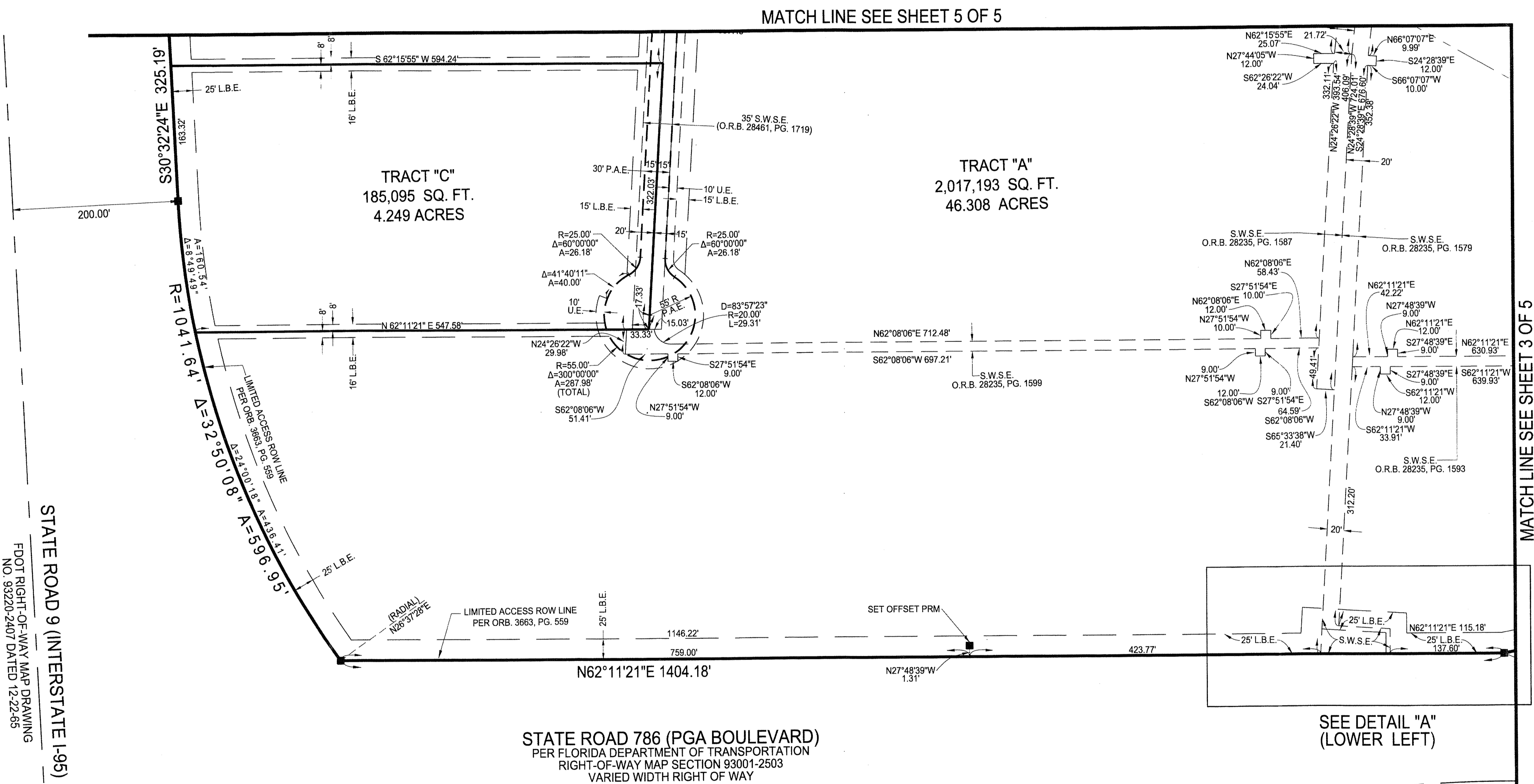
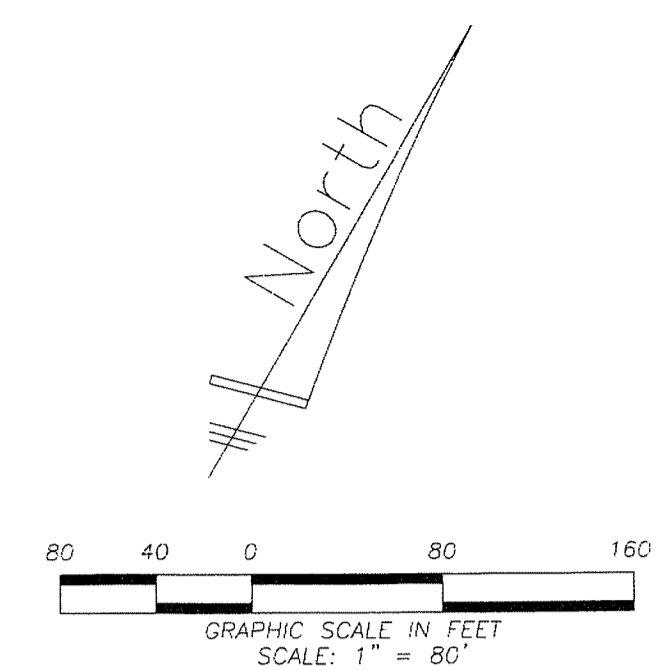
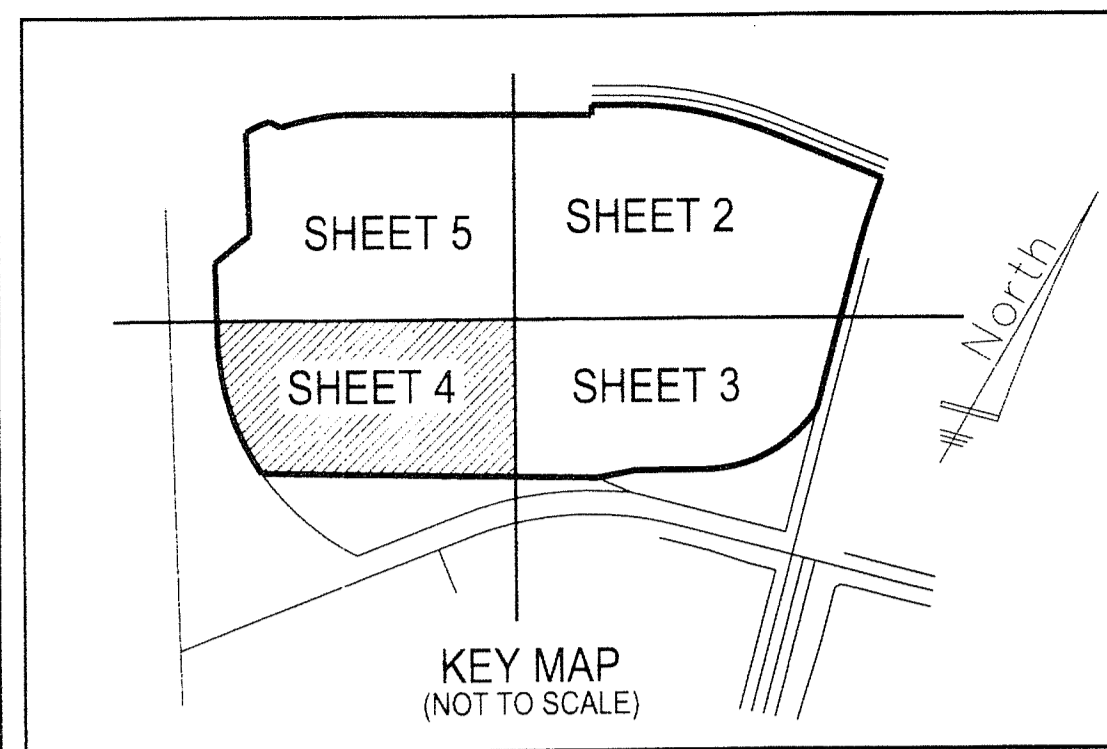


159

MACARTHUR PARCEL 5A-REPLAT

BEING A REPLAT OF WATER MANAGEMENT TRACTS 1 & 2, PRESERVE TRACT, OPEN SPACE TRACTS 1 & 2 AND LOTS 1 THROUGH 17,
AS SHOWN ON MACARTHUR PARCEL 5A, AS RECORDED IN PLAT BOOK 111, PAGES 171-175, PUBLIC RECORDS OF PALM BEACH COUNTY, FLORIDA
SITUATE IN SECTION 1, TOWNSHIP 42 SOUTH, RANGE 42 EAST AND SECTION 6, TOWNSHIP 42 SOUTH,
RANGE 43 EAST, CITY OF PALM BEACH GARDENS, PALM BEACH COUNTY, FLORIDA
AUGUST 2016 SHEET 4 OF 5

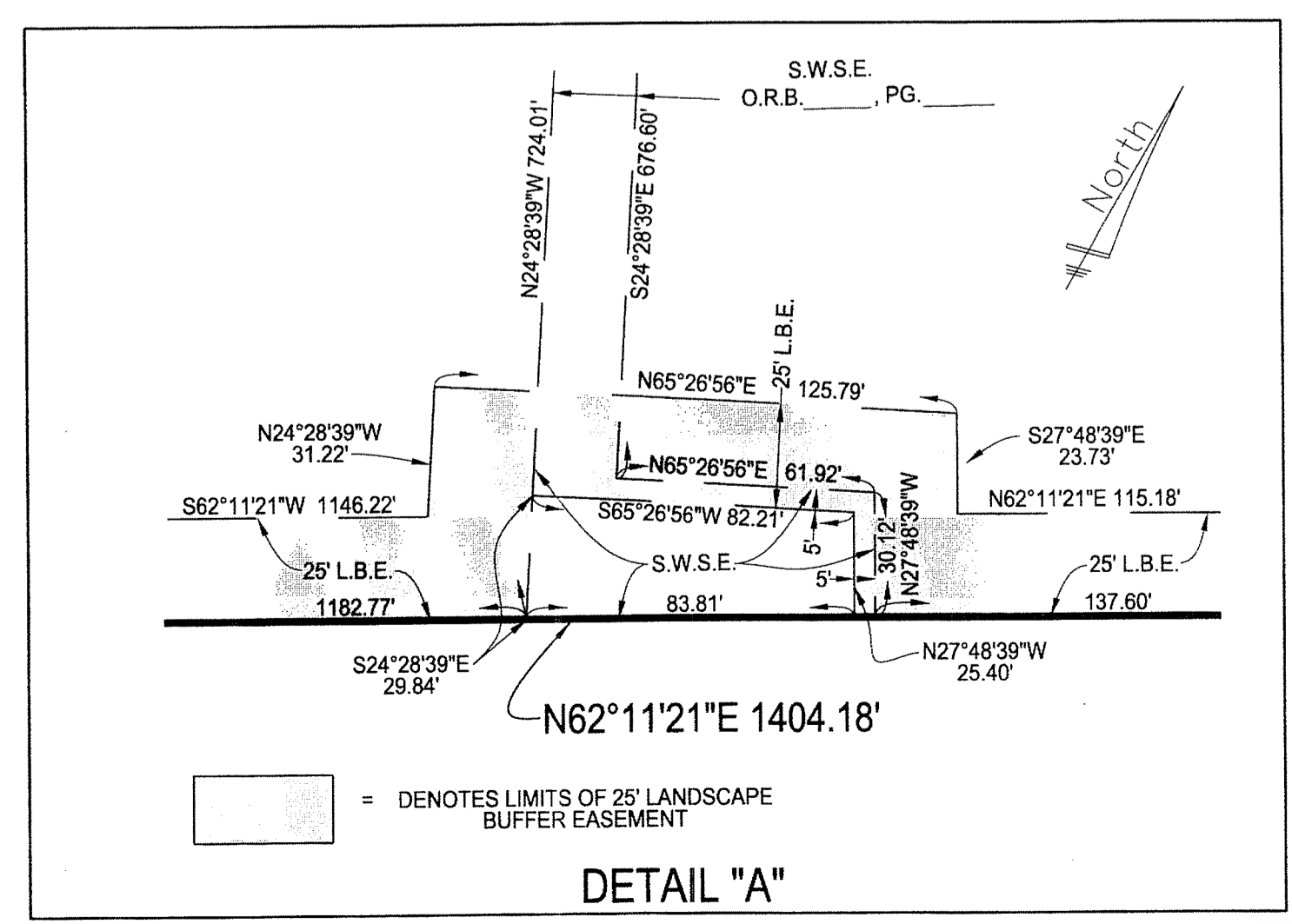


ABBREVIATIONS

- R = RADIUS
- A = ARC LENGTH
- D = DELTA
- CB = CHORD BEARING
- CH = CHORD DISTANCE
- CIL = CENTER LINE
- DB = DEED BOOK
- DE = DRAINAGE EASEMENT
- FEC = FLORIDA EAST COAST RAILROAD
- FDOT = FLORIDA DEPARTMENT OF TRANSPORTATION
- FND = FUND
- FPL = FLORIDA POWER & LIGHT
- LB = LICENSED BUSINESS
- LBE = LANDSCAPE BUFFER EASEMENT
- LME = LAKE MAINTENANCE EASEMENT
- LMAE = LAKE MAINTENANCE ACCESS EASEMENT
- NPBCID = NORTHERN PALM BEACH COUNTY IMPROVEMENT DISTRICT
- NR = NON RADIAL
- OIA = OVERALL LOT DIMENSION
- ORB = OFFICIAL RECORD BOOK
- OS = OPEN SPACE
- PAE = PUBLIC ACCESS EASEMENT
- PB = PLAT BOOK
- PG = PAGE
- POB = POINT OF BEGINNING
- POC = POINT OF COMMENCEMENT
- PPAE = PUBLIC PEDESTRIAN ACCESS EASEMENT
- PRM = PERMANENT REFERENCE MONUMENT
- ROW = RIGHT-OF-WAY
- RPB = ROAD PLAT BOOK
- SLSE = SEACOAST UTILITY LIFT STATION EASEMENT
- SQ. FT. = SQUARE FEET
- SR = STATE ROAD
- SWSE = SEACOAST UTILITY WATER AND SEWER EASEMENT
- SUA = SEACOAST UTILITY AUTHORITY
- UE = UTILITY EASEMENT
- WME = WATER MANAGEMENT EASEMENT
- WMT = WATER MANAGEMENT TRACT

LEGEND

- FOUND 4"x4" CONCRETE MONUMENT STAMPED *PRM LB 4431* PERMANENT REFERENCE MONUMENT (P.R.M.), UNLESS OTHERWISE NOTED.
- ▲ FOUND NAIL & DISK *PRM LB #4431* UNLESS OTHERWISE NOTED
- FOUND 5/8" IRON ROD & CAP *LB #4431* UNLESS OTHERWISE NOTED
- SET 4"x4" CONCRETE MONUMENT STAMPED *PRM LB 4431* PERMANENT REFERENCE MONUMENT (P.R.M.), UNLESS OTHERWISE NOTED.



LIDBERG LAND SURVEYING, INC.
 675 West Indiantown Road, Suite 200,
 Jupiter, Florida 33458 TEL. 561-746-8454
 LB 4431

CAD	K:\AUTOCAD2000\014242\111-171\11-025\DWG\11-025-306.DWG		
REF	K:\AUTOCAD\MACARTHUR\1578-105C.DWG		
FLD	A.M.	FB. 288	PG. 12, 14-15, 17-18
OFF	D.P.K., E.C.		DATE AUGUST 2016
CKD	D.C.L.	SHEET 4 OF 5	DWG D11-025P